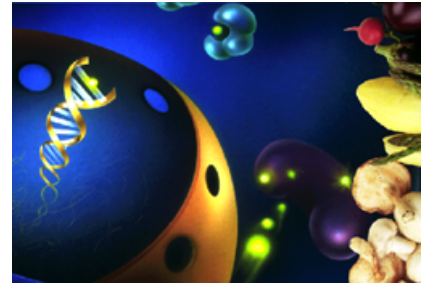
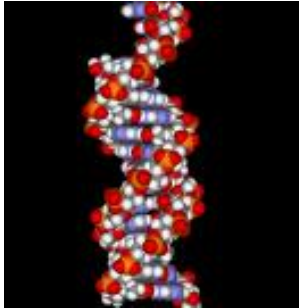




## Texas A&M University Pathways to the Doctorate Fellowship



### **Are you interested in earning a doctoral degree in Biomedical Engineering, Genetics, Kinesiology, Nuclear Engineering or Nutrition?**

Students from Texas A&M System universities (not from College Station campus) interested in these options are eligible to compete for a Pathways to the Doctorate Fellowship. This program is dedicated to increasing the number, quality, and diversity of Doctoral graduates across all disciplines within the Texas A&M University System. The goal of the Pathways to the Doctorate Fellowship Program is to attract high achieving students within the Texas A&M University System to pursue their doctorate at Texas A&M in College Station.

Successful applicants to this program will be completing their research in the laboratories of a mentor identified at this website: <http://slsgraduateprogram.tamu.edu/NSBRI/>. One benefit of this program is that the successful applicant has the option of competing for a Space Life Sciences Fellowship in the second year. Students in that program gain the knowledge, training, and skills to perform the work necessary to successfully participate in addressing three of the most critical problems in space life sciences that limit long duration space flight: 1) bone loss, 2) muscle wasting, 3) cardiovascular mal-adaptations, and 4) effects of cosmic radiation exposure.

#### Fellowship Details:

- 1) Must be a graduate of Texas A&M University System school outside of College Station, and be a US citizen or permanent resident
- 2) Must pursue a doctorate degree in Biomedical Engineering, Genetics, Kinesiology, Nuclear Engineering (Health Physics) or Nutrition
- 3) Pathways Fellows are eligible to compete for a Space Life Sciences Fellowship

**Applications must be submitted by January 3, 2016.**

**One fellowship is awarded each year that includes a 1 year of stipend (\$20,000) and health insurance, and 2 years of tuition and fees (\$9,000 each year).**

For more information about the fellowship or application process please contact:  
Dr. Nancy Turner, Research Professor  
Nutrition and Food Science, Texas A&M University  
Phone: 979-845-4426 E-Mail: n-turner@tamu.edu